



ALT boom gate series for commercial and industrial use



**MADE IN
ITALY**

ALT boom gate series

FASTLINE



ALT324KF FAST - FOR BARS UP TO 3 m, 24 Vdc

- FAST adjustable opening and closing speeds up to 1 s
- built-in encoder for absolute precision and speed control
- integrated double red/green LED
- UV resistant epoxy powder coating, dark grey (RAL 7016) and light grey (RAL 7047)
- stainless steel version available on request
- designed for intensive use
- bar can be installed left or right
- fully protected control unit in IP54 enclosure
- designed and Made in Italy



ALT424K - FOR BARS UP TO 4 m, 24 Vdc

- adjustable opening and closing speeds up to 3.5 s
- built-in encoder for absolute precision and speed control
- integrated double red/green LED
- UV resistant epoxy powder coating, dark grey (RAL 7016) and light grey (RAL 7047)
- stainless steel version available on request
- designed for intensive use
- bar can be installed left or right
- fully protected control unit in IP54 enclosure
- designed and Made in Italy

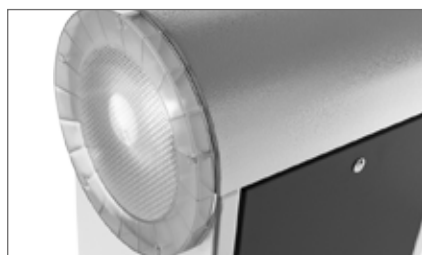


ALT624K - FOR BARS UP TO 6 m AND 8 m, 24 Vdc

- adjustable opening and closing speeds up to 6 s
- built-in encoder for absolute precision and speed control
- integrated double red/green LED
- UV resistant epoxy powder coating, dark grey (RAL 7016) and light grey (RAL 7047)
- stainless steel version available on request
- designed for intensive use
- bar can be installed left or right
- fully protected control unit in IP54 enclosure
- dual spring system for smoother operations
- extension kit for bars up to 8 m (speed 12 s)
- robust 3mm thick steel tower
- designed and Made in Italy

		ALT324KF	ALT424K	ALT624K
MECHANICAL DATA				
torque	Nm	40	200	305
working cycle	%	50	80	80
opening time at 90°	s	1	3.5	6/12*
ELECTRICAL DATA				
control board		CT102 24F	CT102 24	CT102 24
power	Vac	230	230	230
consumption	A	1.6	1.3	1.3
absorbed power	W	330	300	300
integrated LED lights		yes	yes	yes
GENERIC DATA				
protection degree	IP	54	54	54
dimensions (L - D - H)	mm	450 - 280 - 1188	360 - 220 - 1110	450 - 280 - 1188
weight	kg	62	47	67
working temperature	°C	-20 + 55	-20 + 55	-20 + 55
maximum bar length	m	3	4	6 m or 8 m

* with 8 m bar



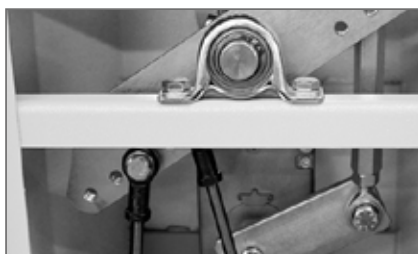
Double red/green LED light



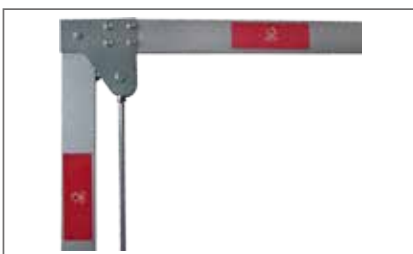
Bar with integrated red/green LED



IP54 protected control unit



Robust steel components and shock resistant motor (ALT6)



Articulated arm mechanism (max 3 m)



Battery back-up system (option)





KEY AUTOMATION AUSTRALIA

Unit 2 - 11 Cooper Street
Smithfield NSW 2164
AUSTRALIA

Ph. 1300 001 KEY - 1300 001 539
info@keyautomation.com.au
www.keyautomation.com.au



follow us:     